



**INDUSTRY  
ADVISORY  
BOARD  
EVENT**



# 2023 IAB Annual Event Handbook

February 15, 2023  
**OMNI Hotel • Irving, Texas**



## 2023 Industry Advisory Board Annual Event

February 15, 2023

## Contents

### Event Information

- IAB Event Agenda
- List of Attendees
- Thank you Event Planning Committee

### About ACCE

- Note from Steve Nellis, President of ACCE  
About ACCE

### Morning Session

- Call to Order, Greeting and Orientation
- ACCE Overview
- Trends in the Recruitment and Placement of CM Students and CM Program
- Distance Learning Trends, Technology and Lessons Learned
- Workforce Development and Accreditation Education
- Industry Associations and Support

### Afternoon Session (TWO Tracks)

#### ACCE Industry Caucus

#### Track ONE

- Industry Participation in the Development of SLO's
- How to Create and Grow an Effective IAB.

#### Track TWO

- Initial Visiting Team Training
- Questions to ask your Program

### Closing Remarks

### Reception - OMNI Hotel

### Dinner & Networking

- Cork & Pig Tavern

# Agenda

## ACCE Industry Advisory Board (IAB) Event Wednesday, February 15, 2023

**7:00 AM – 8:00 AM Registration and Breakfast**

**8:00 AM - 8:15 AM Call to Order & Introduction**

**8:15 AM - 8:45 AM**

**Session 1 - ACCE Overview**

**Format: Presentation**

**Presenters:**

- Ms. Joy Svoboda, Chair, ACCE Marketing and Communications Committee
- Mr. Charlie Roesset, Chair, ACCE Board of Trustees
- Mr. Steve Nellis, President | CEO, ACCE

**Topical Content:**

- ACCE mission and strategic plan
- Accreditation essentials
- Industry Participation in the Academic Process
- Newsworthy items from companies and ACCE

**8:45 AM - 9:45 AM**

**Session 2 - Trends in the Recruitment and Placement of CM Students and CM Program**

**Instructors**

**Format: Panel Discussion**

**Panelists:**

- Ms. Heather Gay, Director of Construction Management, Dunwoody College of Technology
- Ms. Julie Rose, Coordinator, Community and Student Engagement and Public Relations Florida Gulf Coast University
- Dr. Robert Cox, Director, M.E. Rinker School of Construction Management, University of Florida
- Mr. Drew Yantis, Senior Lecturer, Auburn University; Retired, EVP Holder Construction
- Dr. Gerrard Delatte, Professional in Residence, Louisiana State University

**Topical Content:**

- Recruiting a diverse population - best practices
- Recruiting pools traditional and non-traditional students - ACE, Helmets to Hardhats
- Input vs Output- Student Recruitment/Placement and Impact on Starting Salaries (ACCE database)
- Faculty Recruitment to meet demand
- ACCE Scholarship Program for Practitioners
- Guest Lecture Programs- Recruitment from Industry
- Current Issues with Program Faculty- Faculty PhD programs expansion

**9:45 AM – 10:00 AM Break**

**10:00 AM -10:45 AM**

**Session 3 - Distance Learning Trends, Technology and Lessons Learned**

**Format: Presentation**

**Presenters:**

- Dr. Mike Jackson, Chair, Neiri Department of Construction, Development and Planning , Clemson University
- Dr. Kimberly Williams, Online Programs Manager, Louisiana State University
- Professor Stephanie Heumann, Professional in Residence, Louisiana State University
- Dr. Carol Massara, East Carolina University

**Topical Content:**

- Development and Optimization of on-line courses - on-line course demonstration
- Lessons learned and Best Practices
- Technology - Learning Management Systems, Expansion of Current Technology
- Best practices



## Agenda (cont)

**10:45 AM - 11:30 AM**

**Session 4 - Workforce Development and Accreditation**

**Format: Presentation**

**Presenters:**

- Mr. Bill Good, National Roofing Alliance and Chair, ACCE Construction Workforce Education Committee
- Dr. Mostafa Khattab, President, Western States College of Construction
- Ms. Heather Sherwood, VP of Academic Affairs, Western States College of Construction

**Topical Content:**

- Initiatives for accreditation of workforce training programs
- Accreditation of construction affiliated programs
- Demand for Craft Instructors

**11:30 AM - 12:00 PM**

**Session 5 - Industry Associations and Support**

**Format: Panel Discussion**

**Panelists:**

- Mr. Marty Garza, AGC Education Foundation
- Mr. Tim Mongeau, Association of Builders and Contractors
- Dr. Warren Plugge, Associated Schools of Construction
- Mr. Gregg Bradshaw, American Institute of Constructors
- Ms. Crissy Ingram, National Association of Women in Construction
- Mr. Dan Belcher, Consultant

**Topical Content:**

- Associations and support through student chapters
- Associated Schools of Construction (ASC) - Collaboration and Partnering
- Student Achievement and Curriculum Feedback Support
- Scholarships and financial support

**12:00 PM - 1:15 PM Lunch**

## Afternoon Session

**1:15 PM - 2:15 PM**

**ACCE Industry Caucus**

**Format: Caucus Meeting**

**Facilitator:**

Ms. Joy Svoboda, Chair, ACCE Industry Caucus

**Topical Content:**

- Discuss the mission and purpose for the Industry Caucus
- Discuss new business
- How Industry members can get involved through Caucus and be a Trustee on ACCE Board.



## Track I

**2:15 PM - 3:15 PM**

**Session A - Industry Participation in the Development of SLO's**

**Format: Panel Discussion**

**Panelists:**

- Dr. Chuck Berryman, Louisiana State University
- Dr. Robert Ries, University of Florida
- Dr. John Schmidt, Retired, Ferris State University
- Mr. Drew Yantis, Senior Lecturer, Auburn University; Retired, EVP Holder Construction
- Mr. Marty Garza, AGC Education Foundation

**Topical Content:**

- SLO revisions current and future
- Internship Integration into SLO's to Adding Value for the Student and Program

**3:15 PM - 4:15 PM**

**Session B - How to Create and Grow an Effective Industry Advisory Board**

**Format: Panel Discussion**

**Panelists:**

- Mr. Allen Galloway, President, IUPUI Industry Advisory Board
- Ms. Sue Perlin, Retired, Partner, Plante Moran CPA
- Mr. Scott Couper, LSU Construction Industry Advisory Council
- Dr. Charlie McIntyre, Retired, IUPUI, Department Chair

**Topical Content:**

- An Organizational Template
- Program Oversight and Management
- IAB Organizational Template
- IAB Structure and Fund Raising

## Track II

**2:15 PM - 4:15 PM**

**Initial Visiting Team Training**

**Format: Presentation**

**Presenters:**

- Dr. Al Bleakley, Chair, ACCE Training Committee
- Ms. Heather Gay, Vice-Chair, ACCE Training Committee

**Topical Content:**

- How to get involved as a member of an ACCE Visiting Team
- Basic requirements and activities needed to be a Visiting Team Member

**4:15 PM - 4:45 PM**

**Closing Remarks**

- Mr. Paul Mattingly, Chair, ACCE Industry Advisory Board Event Committee
- Mr. Steve Nellis, President | CEO, ACCE

**5:30 - 6:30 Reception - Omni Hotel**

**7:00 - 9:00 Dinner and Networking - Cork & Pig Tavern**

**Cork & Pig Tavern**

---

# Thank You

## 2023 IAB Event Planning Committee

Mr. Paul Mattingly

Mr. Geno Hogan

Dr. David Martin

Mr. Dan Belcher

Dr. Charles Berryman

Ms. Marjorie Chang Fuller

Mr. Scott Couper

# THANK YOU TO OUR SPONSORS!

## DIAMOND LEVEL \$2500



## EMERALD LEVEL \$1500



Nieri Department of  
**CONSTRUCTION,  
DEVELOPMENT AND  
PLANNING**

## RUBY LEVEL \$1000

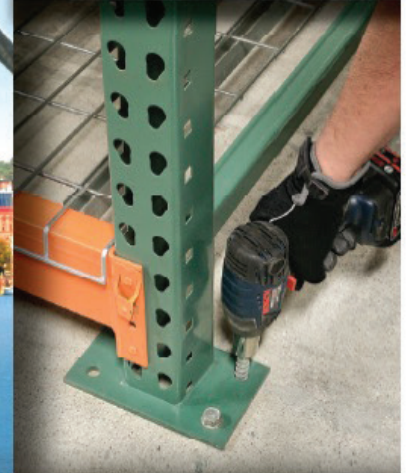
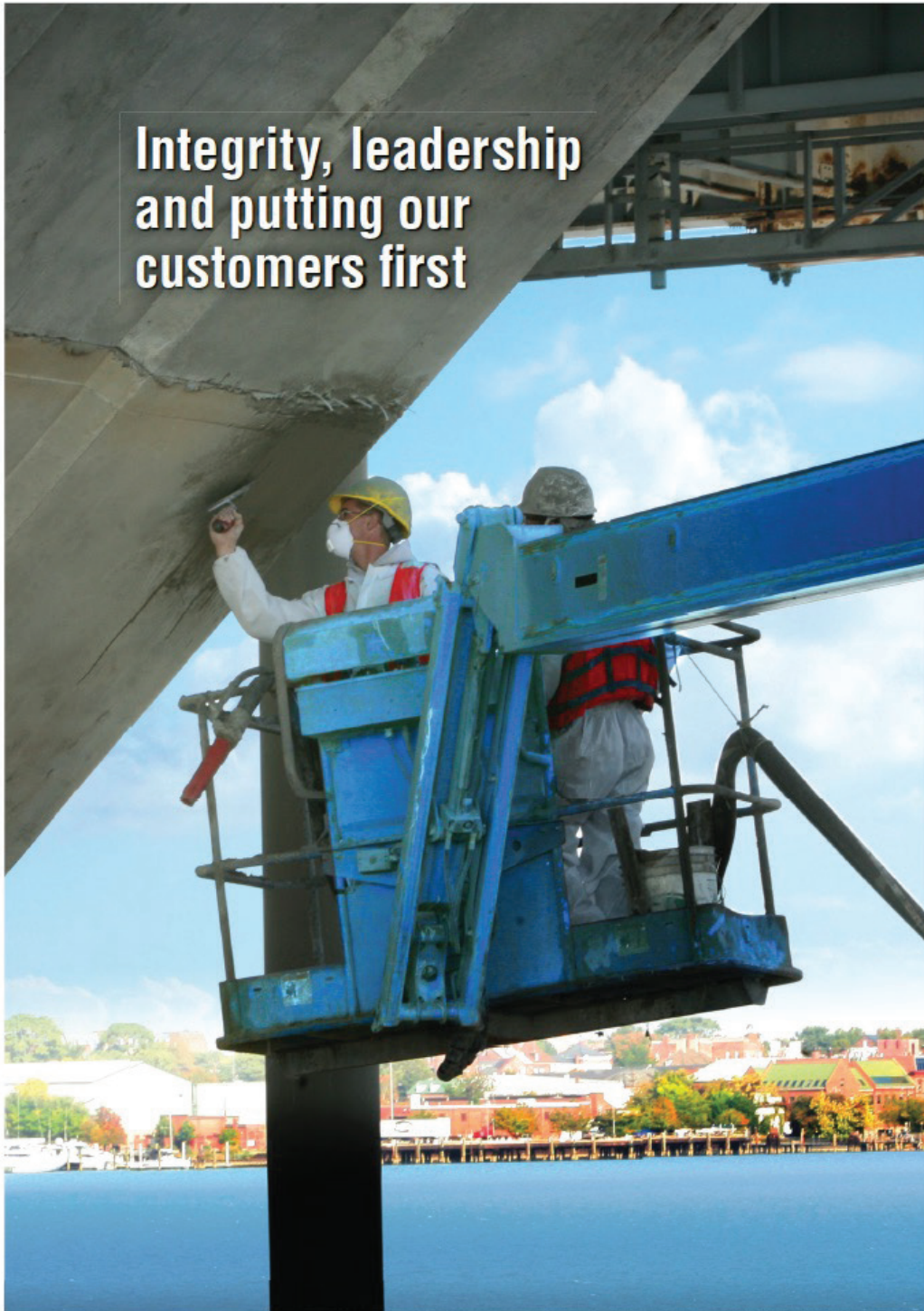


## OPAL LEVEL \$500





**Integrity, leadership  
and putting our  
customers first**



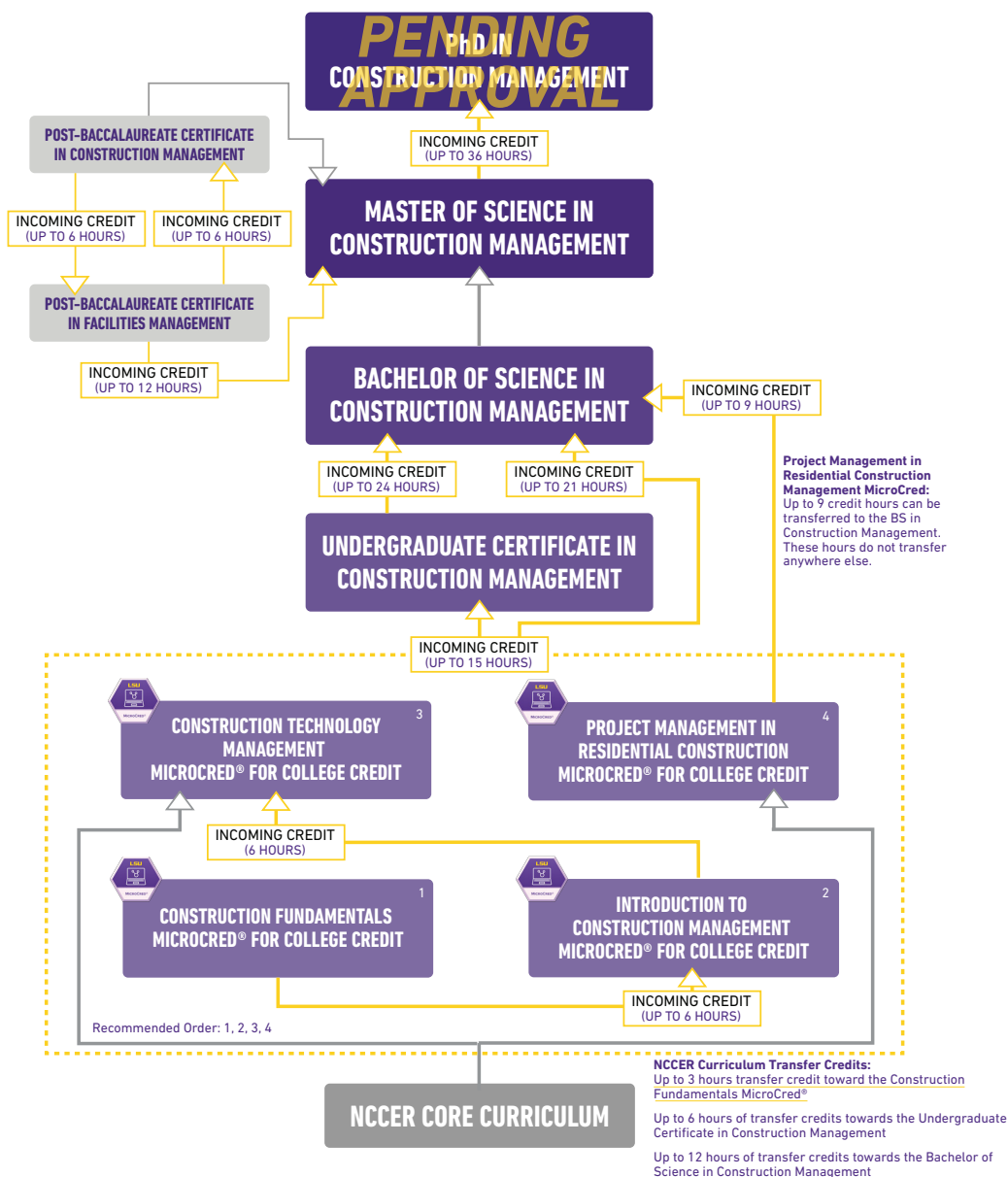
In 1956, Simpson Strong-Tie made its first connector to help solve a customer's design need. Since that time the company has continued to invest in research and testing to develop new products that improve building construction and adhere to the highest quality standards. Today our product offering includes connectors, fasteners, fastening systems, lateral-force resisting systems, anchors and products that repair, protect and strengthen concrete. Our commitment to helping our customers succeed is integral in everything we do from product innovation and field support to complimentary and accredited training.

To learn more about how we can support you, visit [www.strongtie.com](http://www.strongtie.com) or call (800) 999-5099.

**SIMPSON**  
**Strong-Tie**

# LSU Online

## CONSTRUCTION MANAGEMENT PATHWAYS FOR EVERY STUDENT



VISIT [ONLINE.LSU.EDU](https://online.lsu.edu) FOR MORE CONSTRUCTION MANAGEMENT INFORMATION

**LSU Online**

833-280-5634 | [lsuonline@lsu.edu](mailto:lsuonline@lsu.edu) | [online.lsu.edu](https://online.lsu.edu) | @lsuonline



V10.2021





The Louisiana State University Construction Industry Advisory Council (CIAC) was established in 1997 to help build LSU's Construction Management (CM) Department into the premier training ground for construction managers. From socials to skills training, the CIAC involves students well before graduation with programs that give them the skill sets they need to make a real impact as soon as they enter the work force. Cooperative work programs include: a mentoring program, interviewing skills workshop, networking opportunities, and field trips.



# EMERALD SPONSOR

2023 Industry Advisory Board Annual Event  
February 15, 2023



*Nieri Family Department of*  
**CONSTRUCTION SCIENCE  
AND MANAGEMENT**  
*Clemson® University*

# EMERALD SPONSOR

2023 Industry Advisory Board Annual Event  
February 15, 2023



**DYNAMIC  
BUILD**

**718-569-5159**

**@dynamicbuildny  
services@dynamicbuild.com**

**1694 Mcdonld Ave.  
Brooklyn, NY 11230**

# EMERALD SPONSOR

2023 Industry Advisory Board Annual Event  
February 15, 2023

# PROCORE





# RUBY SPONSOR

2023 Industry Advisory Board Annual Event  
February 15, 2023

# VERITAS

C O N S T R U C T I O N



AMERICAN COUNCIL FOR  
CONSTRUCTION EDUCATION  
PARTNERSHIP FOR EXCELLENCE





# RUBY SPONSOR

2023 Industry Advisory Board Annual Event  
February 15, 2023



**CONGLETON -  
HACKER CO.**

Construction Managers / General Contractors



AMERICAN COUNCIL FOR  
CONSTRUCTION EDUCATION  
PARTNERSHIP FOR EXCELLENCE

INDUSTRY  
ADVISORY  
BOARD  
of ACCE

IAB







**Kiewit**

**VERITAS**  
**C O N S T R U C T I O N**

THE TIME IS NOW  
**KAIROS** MARKETING+  
CONSULTING

*kai•ros*

*'kīrās - noun (Theology)*

*1. a propitious moment for decision or action.*

**Helping you stand  
out from the rest.**



**DESIGNING, CONSULTING, EXECUTING FOR SOCIAL IMPACT, MARKETSHARE, AND PROFIT**

Fort Worth, Texas | [www.kairosmarketingllc.com](http://www.kairosmarketingllc.com)

**SpawGlass**

## A Note from ACCE President/CEO



The American Council for Construction Education (ACCE) is a 501(c)(3) private non-profit corporation. The mission of ACCE is to be a leading global advocate of quality construction education; and to promote, support, and accredit quality construction education programs. The primary goal is the promotion and continued improvement of postsecondary construction education. Specifically, ACCE's primary focus is to accredit construction education programs in colleges and universities that request its evaluation and meet its standards and criteria.

The Council for Higher Education Accreditation (CHEA) provides the oversight of ACCE as the accrediting agency for a four-year baccalaureate degree, two-year associate degree, and master degree programs in construction, construction science, construction management, and construction technology programs.

Based on the requests from our industry constituents, ACCE offers a Professional Development Certification (PDC) Program. The Program's purpose is to recognize industry-related professional development programs provided by educational institutions, industry associations, and private companies that meet ACCE criteria for certification.

Also, based on our industry requests, ACCE has an accreditation process for Construction Workforce Education (CWE) programs, otherwise known as skilled workforce training, conducted by trade unions, colleges and universities, industry associations, and private industry organizations.

ACCE was organized in 1974 by the American Institute of Constructors (AIC), the constructor's professional organization, and the Associated Schools of Construction (ASC). ACCE enjoys the support of these two associations and many of the North American building and contracting associations and the academic Institutions seeking to satisfy the needs for highly qualified entry-level management personnel into the construction profession.

By working together under the aegis of ACCE, representatives of the entire construction community and the public at large, construction educators and constructors establish and maintain standards and criteria for accreditation, provide guidance to those seeking to achieve accredited status, and carry out the accreditation and reaccreditation processes. In doing so, ACCE serves potential students' interests by helping them identify Institutions and Construction Degree Programs that offer quality education in construction management and technology. It also serves the industry's interests by enabling employers to identify persons who, because of their education and training, have the potential for making lasting contributions to the industry and their profession.

ACCE also serves the interests of owners/users of constructed facilities and the public by raising the professional caliber of constructors and the quality of the construction they build and acquire.

ACCE has developed reciprocal agreements with the National Board for Construction Management Accreditation (NBCMA) of the People's Republic of China and The Chartered Institute of Builders (CIOB) in the United Kingdom. These agreements recognize university degree programs accredited by NBCMA and CIOB to be equivalent to Baccalaureate Degree Programs or Associate Degree Programs accredited by ACCE and the same equivalency for NBCMA and CIOB accredited Degree Programs.

A handwritten signature in blue ink, reading "Steve Nellis".

Steve Nellis

President & CEO

# Why Join ACCE as an Industry/ Association Member?

- You can influence the development of the industry's future managers and leaders.
- You can participate in the evolution and improvement of accreditation standards and criteria.
- You can help monitor programs that prepare graduates who will ultimately determine the "bottom line" success of the industry.
- You can partner with local construction education programs in service and research activities.
- You can be a member of accreditation visiting teams.
- You can serve on program advisory committees.
- You can help guide accreditation requirements to ensure program graduates are well prepared to meet the professional challenges facing the industry.
- You can partner with a program to sponsor field trips, summer internships, and cooperative education activities.
- You can serve on the ACCE Board of Trustees.

To apply, complete the application(s) found at <https://www.acce-hq.org/about-membership>.

Organization (Industry) dues are \$3000 per year and Sustaining Association dues are \$6000 per year.

Individual memberships are also available for \$150 per year. ACCE is a 501-c-3 corporation and is considered a charitable organization. Consult with your tax advisor regarding the possibility of dues and contributions to ACCE as being tax deductible donations.

# ACCE Construction Workforce Programs

The mission of ACCE is to be a leading global advocate of quality construction education and promote, support, and accredit construction education programs and single-purpose institutions.

There are a variety of Construction Workforce Education Programs. To enter this space, the Construction Workforce Education Committee started by creating standards for accrediting apprenticeship Institutions that have one or more RAPs in good standing with the US Department of Labor Office of Apprenticeship (OA).

ACCE plans to expand the accreditation of Construction Workforce Education Programs beyond RAPs. To help ACCE determine the demand for expansion to other types of Construction Workforce Education Programs, ACCE will need more industry support and feedback.

The Construction Workforce Education Committee is composed of industry professionals and educators. The Chair is Mr. Bill Good, Roofing Alliance, and the Vice Chair is Dr. Mostafa Khattab, Western States College of Construction.

## CONSTRUCTION WORKFORCE EDUCATION (CWE) LEADERS' PERSPECTIVES ON VALUE OF ACCE ACCREDITATION

*"ACCE is a pioneer in Construction Workforce Education accreditation. Their efforts to partner with Department of Labor Registered Apprentice Programs will promote nationwide awareness for apprenticeship opportunities for individuals and institutions of higher education. Western States College of Construction is honored to be a part ACCE's Construction Workforce Education endeavors!"*

**Heather Sherwood, Vice President of Academic Affairs**  
Western States College of Construction

*"For years, our local and industry partners have searched for ways to promote the excellent career opportunities the apprenticeship training model provides. The American Council for Construction Education (ACCE) is the country's premier construction accreditation organization and the unquestioned leader in verifying the quality of construction education programs offered throughout the US. Their willingness to create accreditation pathways for US Department of Labor Registered Apprenticeship programs is invaluable. ACCE accreditation will lend much needed credibility to the rigorous apprenticeship training programs utilized here at Local 208 and around the country. Marian Wright Edelman was quoted as saying "Education is for improving the lives of others and for leaving your community and world better than you found it." By opening additional opportunities to individuals seeking rewarding and successful careers, ACCE without a shadow of a doubt will improve the lives of future pipefitters and make our communities a better place."*

**Gary Arnold, Business Manager, Denver Pipefitters Local #208**  
Board of Directors Chair  
Western States College of Construction





# ACCE Professional Development Certification Program

In response to the concept of quality education in construction, the American Council for Construction Education has created a Professional Development Certification program for non-degree, career-related education programs. This is an effort to recognize the providers and programs that have a quality process and content aimed at providing education other than skills training. This is NOT accreditation, as it is not aimed at degree granting programs.

## Certified Providers and Programs

The following providers and their specific programs listed have met the standards established by ACCE and are currently certified for their contributions to the construction industry.

**American Society of Professional Estimators  
Certified Professional Estimator (CPE) Program**

**HCSS (Heavy Construction System Specialists)  
HCSS HeavyBid Certification Exam Program**

**National Association of Home Builders  
Certified Aging-in-Place Specialist (CAPS) Program  
Certified Green Professional (CGB) Program**

**NAWIC Education Foundation  
Estimating and Scheduling Practitioner (ESP) Program  
Construction Industry Specialist (CIS) Program  
Construction Industry Technician (CIT) Program  
Construction Document Technician (CDT) Program  
Construction Bookkeeping Technician (CBT) Program**

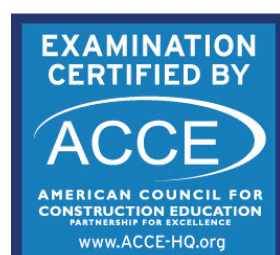
**San Diego AGC  
Prevailing Wage Rate Specialist**

**TechnoStruct - MEP Engineering/ BIM Consulting Service**

## Have a Construction Management Program Worthy of ACCE Professional Development Certification?

If your organization has an ongoing, continuing education program aimed at managers in the construction field, consider applying for ACCE Professional Development Certification.

For more information, visit <https://www.acce-hq.org/professionaldevelopment>



# ACCE Brochures



## ACCREDITATION • CERTIFICATION • PROFESSIONAL DEVELOPMENT



Since 1974, the American Council for Construction Education (ACCE) has been a leading global advocate of quality construction education that promotes, supports, and accredits quality construction education programs. ACCE is a 501(c)(3) non-profit corporation.



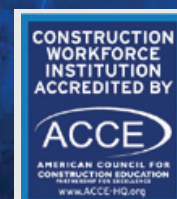
The primary goal is promotion and continued improvement of postsecondary construction education: specifically, ACCE accredits construction education programs in colleges and universities that request its evaluation and meet its rigorous standards and criteria.

The Council offers accreditation for Degree Programs, accreditation of Construction Workforce Education Programs, and certification of industry-related professional development educational programs and examinations.

## SECURING THE FUTURE OF THE CONSTRUCTION INDUSTRY BY ACCREDITING & CERTIFYING HIGH QUALITY CONSTRUCTION EDUCATION PROGRAMS FOR FUTURE INDUSTRY LEADERS

*"Now we just recruit from ACCE accredited institutions. Students from accredited programs progress faster and go further in their careers."*

*Gordon Marshall  
Retired, Pepper Construction*



[www.acce-hq.org](http://www.acce-hq.org)



## OWNERS & USERS

ACCE serves the interests of owners and users of constructed facilities and the public at large by raising the professional caliber of constructors and the quality of the projects for which they assume responsibility.

## STUDENTS

ACCE serves the interest of potential students by helping them identify institutions and programs that offer quality education in construction.

Students graduating from ACCE accredited and certified programs are better prepared to enter the construction industry

## INDUSTRY

ACCE accreditation and certification enables employers to identify quality employees, who by education, have the demonstrated ability to make lasting contributions to their organization and their profession.

## FACULTY

Through ACCE involvement, faculty have opportunities for developing leadership, networking with peers, and keeping current with trends in construction.

*"It is a privilege to work with ACCE members to advance the quality of construction education across the country. Through active participation in ACCE, I have developed a deep appreciation for the strength and diversity of ACCE's accredited two and four-year programs."*

Rebecca Burleson  
Vice President / Sr. Client Executive  
Linbeck

## CREDIBILITY

*"One of the most powerful ways to influence the future of our industry is to partner with the national accreditation process that is—and has been—key to continuous improvement of construction education."*

*Founded in 1974, this joint effort of industry and academia created the gold standard for rigorous construction accreditation in the US, elevated the recognition of construction education on university campuses, and set accredited programs apart."*

Marty Garza  
Higher Education Market Leader  
Bartlett Cocke General Contractors  
Emeritus Board Member  
AGC Education & Research Foundation



## QUALITY

*"It is an honor to serve as a member of an incredible organization like ACCE, an organization driven to support construction education and our industry. With the development of the new work force education initiative, I can say with no hesitation that ACCE is the leading national accreditation agency for construction education."*

Dr. Mostafa Khattab  
President  
Western States College of Construction

## PROFESSIONALISM

For more information please contact:  
**Steve Nellis**  
President/CEO  
300 Decker Drive • Suite 330  
Irving, Texas 75062  
Phone 972.600.8800  
Steve.Nellis@acce-hq.org

[www.acce-hq.org](http://www.acce-hq.org)

REV 2022.01.04





## Industry Advisory Board Membership Application

Any Industry Advisory Board that supports an ACCE accredited construction education program that has an interest to contribute knowledge or support to ACCE may become an Industry Advisory Board (IAB) Member.

- Each IAB Member shall appoint, in writing, a person to serve as its representative. The representative must be a member of the affiliated program's IAB.
- IAB Member representatives may participate as members of the Industry Caucus and may be appointed to any ACCE committees for which they meet qualifications.
- If selected by the Board of Trustees, IAB Member representatives may serve as an officer or member of the Board of Trustees.
- IAB Member representatives will be invited to the Annual Industry Advisory Board Workshop held just prior to the ACCE midyear meeting. Separate registration for the workshop will be required.
- Annual dues for IAB Members are \$2,400 per year. This includes registration fees for one representative at the ACCE Annual and ACCE Midyear meetings, and for the ACCE IAB Event.

**Believing in the goals and objectives of the American Council for Construction Education,  
we apply to become an Industry Advisory Board Member.**

Name of Industry  
Advisory Board \_\_\_\_\_

Name of  
Representative: \_\_\_\_\_ Title: \_\_\_\_\_

Address: \_\_\_\_\_

City: \_\_\_\_\_ State: \_\_\_\_\_ Zip: \_\_\_\_\_

Cell Phone: \_\_\_\_\_ Work Phone: \_\_\_\_\_

Email: \_\_\_\_\_

Signature: \_\_\_\_\_ Date: \_\_\_\_\_

# IAB Event Roster



## Industry Advisory Board Event Attendees

Full name	Professional Title	Company / Association	Email Address
Mr. Gary Arnold	Business Manager	Denver Pipefitters Local #208	gary@pipe208.com
Mr. Jeff Arviso	SVP & Chief Engineer	Manson Construction Co. (University of Washington CIAC)	jarviso@mansonconstruction.com
Mr. Dan Belcher	Senior Area Advocate	Promising People	DBelcher@promisingpeople.com
Dr. Charles Berryman	Chair and Professor	Louisiana State University	cberryman@lsuemail.net
Professor Richard Burt	School Head	Auburn University	rab0011@auburn.edu
Ms. Marjorie Chang Fuller	Business Development Manager	Washington State University IAB	marjorie-changfuller@hoffmancorp.com
Mr. Gary Chubb	Vice President/Senior Construction Manager	Legacy Partners	gchubb@legacypartners.com
Dr. Robert Cox	Director and Professor	UF Rinker School	robcox@ufl.edu
Dr. Gerrad Delatte	Professional in Residence	Louisiana State University	gdelatte@lsu.edu
Mr. Anthony Dixon	Senior Project Manager	H. J. Russell & Company	adixon@hjrussell.com
Mr. David Dorsch	Retired	Retired	dfixone@yahoo.com
Mr. Allen Galloway	Director of Business Development	Triad Associates Inc.	galloway.allen@yahoo.com
Ms. Heather Gay	Director, Construction Sciences and Business	Dunwoody College of Technology	hgay@dunwoody.edu
Mr. John Green	Faculty Member	Minnesota State University, Moorhead	john.green@mnstate.edu
Mrs. Jordyn Grote	Manager of Academic Operations	Western States College of Construction	jordyn@westernstatescollege.org
Mr. Matt Hackman	Estimator	Mortenson	matt.hackman@mortenson.com
Mr. Rodney Hall	Partner	Hall-Williams Executive Search	rodnev@rodneymhall.com
Dr. Allan Hauck	Department Head Emeritus	California Polytechnic State University, San Luis Obispo	ahauck@calpoly.edu
Professor Stephanie Heumann	Professional in Residence	Louisiana State University	SHeumann@LSU.edu
Dr. Ahmed Hosni	Program Head Bachelor of Construction Management	Saskatchewan Polytechnic	hosnia@saskpolytech.ca
Professor Mike Jackson	Department Chair	Clemson University	nmjacks@clemson.edu
Mr. Scott Jennings	COO	Moeller Purcell Construction	scott@moellerpurcell.com
Ms. Sharon Jozokos	VP of Healthcare	Columbia Construction	sjozokos@columbiacc.com
Dr. Huzefa Kagdi	Dean of U.A. Whitaker College of Engineering	Florida Gulf Coast University	hkagdi@fgcu.edu
Mrs. Karen Kemp	Vice President, Business Development and Marketing	ASRC Industrial / MSUM	karen.kemp@asrcindustrial.com
Dr. Mostafa Khattab	President	Western States College of Construction	mostafa@rmmca.org
Ms. Susan Labas	Senior Marketing Associate - Retired	Central Connecticut State University	slabas@gmail.com
Mr. Angel Leon	Outreach Manager	Simpson Strong-Tie	aleon@strongtie.com
Mr. Parth Makwana	Director of Business Development	Technostruct, LLC	parth@technostruct.com
Mr. Paul Mattingly	Senior Vice President	AIC/Congleton-Hacker Co.	PMattingly@Congleton-Hacker.com
Dr. Charles McIntyre	Retired	Indiana University Purdue University Indianapolis (IUPUI)	cmcintyre157@gmail.com
Mr. Tim Mongeau	Director of Workforce Development	Association of Builders and Contractors	mongeau@abc.org
Mr. Steve Nellis	President	American Council for Construction Education	Steve.Nellis@ACCE-HQ.org
Mr. Murray Papendorf	Manager	Amazon	m.papendorf@icloud.com
Mr. Jason Peschel	Director	Washington State University	jpeschel@wsu.edu
Mr. Charles Roeset	Director of Training	Charles Roeset	croeset@strongtie.com
Ms. Julie Rose	Coordinator, Community and Student Engagement	Florida Gulf Coast University	jrose@fgcu.edu
Mr. Matt Rowlett	Director of Operations	Nor Cal Carpenters Training	mrowlett@ctcnc.org
Ms. Heather Sherwood	Vice President of Academic Affairs	Western States College of Construction	heather@westernstatescollege.org
Dr. Euysup Shim	Associate Professor	Illinois State University	eshim@ilstu.edu
Ms. Karima Simmons	Director of Development & Communications	National Housing Endowment	ksimmons@nahb.org
Mr. Brandon Smith	Construction Manager	The McCaffrey Group	bsmithconstruction@hotmail.com
Dr. Monica Snow	Associate Professor	Wentworth Institute of Technology	snowm1@wit.edu
Dr. Bobbi Spencer	CSM Program Coordinator	Texas State University	bjspencer@txstate.edu
Ms. Joy Svoboda	Owner/Executive Consultant	ViewsValuesVisions	ViewsValuesVisions@gmail.com
Professor Sally Ann Swearingen	Coordinator of CMGT	Stephen F. Austin State University	sswearingen@sfasu.edu
Mrs. Sandra Townsend	Administrative Personnel Manager	Nor Cal Carpenters Training	stownsnd@ctcnc.org
Mrs. Cathy Tyler	Director of Accreditation and Workforce Development	National Center for Construction Education & Research (NCCER)	ctyler@nccer.org
Mr. Micah Tysver	VP	Minnesota State University, Moorhead	micah@usequipsales.com
Dr. Brian Wasserman	Professor, Department Chair	Minnesota State University- Mankato	brian.wasserman@mnsu.edu
Mr. Howard Weiss	EVP	ESCO Institute	hweiss@escogroup.org
Dr. Kimberley Williams	Instructor/Online Coordinator	LSU	kimwilliams@lsu.edu
Mr. Edward Wygnal	Project Manager	Johnson Controls Inc	wygnaled@gmail.com
Professor Drew Yantis	Senior Lecturer	Auburn University	acy0009@auburn.edu
Dr. Fan Zhang	Assistant Professor	University of Southern Mississippi	fan.zhang@usm.edu
Ms. Polly Zheng	BSc	Brighton College	polly@brightoncollege.com
Ms. Luiza Zlatovic	M.Sc.	Brighton College	luiza.l@brightoncollege.com



# Agenda Details

## Call to Order - Paul Mattingly



**Paul Mattingly**  
Senior Vice President  
Congleton-Hacker Construction Co

Paul earned his Bachelor of Science in Construction Science degree from Kansas State University and his MBA from Bellarmine University in Louisville. With 36 years of industry experience, Paul has an extensive background with a variety of construction types and uses, from multi-family projects with wood frame structures to multi-story commercial buildings with steel and concrete structures. Paul is engaged with all aspects of operations with an emphasis on strategy, customer relations and business development. His practice is to develop business based on relationships of trust, by placing priority on the needs of the client and project. The building process requires a dedicated multi-disciplined team of experts, working together in the interests of the client. As leader of the construction discipline, Paul is committed to bringing ethics and professionalism to the process.

Paul is a recognized industry leader and supports the construction industry through several industry organizations. He is a 2-term Past President and former Board Member of the Associated General Contractors of Kentucky. He is a Past President and current Board Member of the American Institute of Constructors, based in Arlington, VA. Paul is a strong supporter of construction education and serves as a Trustee, Industry Liaison Committee Chair and Visiting Team Member with the American Council for Construction Education, based in Dallas, TX. Paul also volunteers as a member of the Capital Projects Committee with Waterfront Botanical Gardens in Louisville, KY.

## NOTES

---

---

---

---

---

---

---

---

# MORNING SESSIONS

## Session ONE | ACCE Overview

### PRESENTERS



**Ms. Joy Svoboda | Chair, ACCE Marketing & Communications Committee**

As a marketing professional with 26 years of experience in the ACCE business sectors, Joy has worked closely with firm leadership, project managers, business development professionals and the trades. Joy has been involved with ACCE for over ten years and has led the Marketing Communications Committee as well as the Industry Caucus. She has been a member in training and a visiting member and will serve on her third full Accreditation Visit this spring. Joy has served on the IAB for Dunwoody located in Minneapolis and is currently an individual member



**Mr. Charlie Roeset | Chair, ACCE Board of Trustees**

Charles Roeset has been in the building material industry since 1984. Joining Simpson Strong-Tie in Jan 1990, he has covered a sales territory encompassing south Texas, Louisiana, Mississippi, the Caribbean, South and Central America. He held the position of Education and Training manager for the McKinney TX office for 6 years, where he built, managed, and operated both the McKinney TX and Jacksonville FL. Training centers. In Oct. 2001, Charles accepted the role of Company Wide Training Manager, where his responsibilities include managing all aspects of global employee training and development, and supporting Simpson's customer training initiatives. He has been part of developing a recognized training programs in cooperation with industry groups and helps Simpson lead the industry in promoting construction industry education. Charles has served within American Council of Construction Education since 1998 and is the current Chairman of the Board, having served as Industry Caucus Chair, and member of standards, development, marketing and accreditation committees.



**Mr. Steve Nellis | President/CEO, ACCE**

Steve Nellis joined American Council for Construction Education (ACCE) as President/CEO in May 2019. He has had an active role in the ACCE since 2003 when he was selected as the National Association of Home Builders representative to the ACCE Board of Trustees.

Steve brings more than 40 years of experience in management for professional construction firms and industry associations. This includes executive-level leadership in operations and human resources roles for the publicly traded firms Centex Homes and Waypoint Homes. Steve also founded a home building company specializing in sustainably constructed, energy-efficient homes and has operated a construction management and consulting firm. Steve's past clients include the National Housing Endowment, The Home Builders Institute, Cambridge Homes, and Highlander Training Center.

## Session TWO | Trends in the Recruitment of CM Students and CM Program Instructors

### PANELISTS



**Ms. Heather Gay** | Director of Construction Management  
Dunwoody College of Technology

Heather is the Director of Construction and Management programs at Dunwoody College of Technology in Minneapolis, Minnesota. She has been involved in the construction industry for 25 years and in higher education for 13. Heather has implemented creative learning partnerships with the Girl Scouts River Valleys and Rebuilding Together Twin Cities. Prior to moving to academics, Heather worked on large industrial and commercial projects around the U.S., including Barilla Pasta, Carlson Hotels, and Kraft Foods. She worked as a project officer for FEMA after Hurricane Katrina, assessing damaged schools in greater Louisiana.



**Ms. Julie Rose** | Coordinator, Community and Student Engagement and  
Public Relations Florida Gulf Coast University

With over 15 years of experience in higher education, Julie Rose has significantly impacted the engineering and construction management field. With a boots-on-the-ground approach, Julie collaborates with current students to make connections in the communities and industry stakeholders that surround Southwest Florida. She has grown the U.A. Whitaker College of Engineering Ambassador Program from 12 students in 2017 to 50+ student leaders who assist with recruiting and outreach efforts. The Ambassador Program gives prospective students the unique experience to hear from individuals close to their



**Dr. Robert Cox** | Director, M.E. Rinker School of Construction  
Management, University of Florida

As director, Robert leads the day-to-day operations of the Rinker School. He spends much of his time engaged with industry partners while supporting faculty, staff, and students in keeping the School as one of the most reputable construction management programs in the country while maintaining its global recognition. Robert has taught construction management courses in planning and scheduling, estimating, and productivity improvement, cost analyses, construction project simulation, and global construction.



**Dr. Gerrard Delatte** | Professional in Residence, Louisiana State  
University

Gerrard M. Delatte is a former Executive Vice President for Excel USA, an industrial construction, maintenance, turnaround, fabrication, emergency management and disaster recovery firm headquartered in Baton Rouge, Louisiana. In addition to Gerrard's full-time position, he is now an Instructor for the LSU Construction Management Department since 2007 and taught courses in Materials and Methods, Construction Equipment, and Construction Enterprise. He currently teaches the Industrial Emphasis Area courses in Maintenance and Turnarounds, Industrial Estimating, Project Controls, and Electrical / Control Systems.

He is past President of LSU's Construction Industry Advisory Council (CIAC) and currently serves on the Board of Directors. He is a visiting team member for accreditation with the American Council for Construction Education (ACCE) and serves on the Accreditation Committee.

---

As the design and construction industry becomes more involved in the concept of inclusion, educators must respond accordingly in recruiting faculty and students. How can programs look for students and faculty outside the traditional pools? This panel will address these questions to help industry partners understand their role in the recruiting process.

## Session THREE | Distance Learning Trends, Technology and Lessons Learned

### PRESENTERS



**Dr. Mike Jackson** | Chair, Neiri Department of Construction, Development and Planning, Clemson University

Dr. Jackson is an accomplished researcher, educator and academic administrator with over thirty years of experience. His professional career includes employment in both the public and private sectors, including management and leadership roles. He earned the Doctorate degree (Ph.D.) in Civil Engineering from Oregon State University and is a licensed Professional Engineer in multiple states. He also actively participates with numerous professional organizations. He joined Clemson University as Department Chair 2017. As Chair, he has facilitated the growth of the faculty and staff to over twenty (20), serving about 400 degree seeking undergraduate and graduate students. He has also facilitated significant growth in external funding and departmental resources, including a \$5 Million naming endowment and over \$400k in annual Corporate Partner contributions.



**Dr. Kimberly Williams** | Coordinator, Community and Student Engagement and Public Relations Florida Gulf Coast University

Dr. Kimberley F. Williams is an Instructor & Online Programs Coordinator at Louisiana State University in the Bert S. Turner Department of Construction Management. With over 15 years of experience in residential construction, she teaches classes in leadership, strategic planning, project management, internship, and senior capstone. Dr. Williams also manages online undergraduate and graduate construction management degree programs offered through LSU Online. As a result of her dedication to teaching, research, and service, Dr. Williams has received numerous awards including the Contractor Educator of Practice award and LSU Online Leading Transformation award. Having served in the United States Marine Corps, Dr. Williams is actively involved with various initiatives to support military and veteran students at LSU. She also serves on various committees at LSU including the Genesis Student Mentoring Committee & Faculty Senate Diversity Committee. Dr. Williams earned an MBA and Ph.D. in Leadership & Human Resource Development from LSU. She is also an Online Learning Consortium (OLC) Certified Online Educator and Quality Matters (QM) Peer Course Reviewer. Her research interests include Workforce Development, Online Learning, Leadership, Organizational Behavior, and Work-life Balance.



**Professor Stephanie Heumann** | Professional in Residence, M.E. Rinker School of Construction Management, University of Florida

Dr. Kimberley F. Williams is an Instructor & Online Programs Coordinator at Louisiana As an Industry professional with over 20 years of Construction Management field experience and 13 years in the University classroom, Stephanie has an honest handle on the current climate in residential homebuilding. She shares her experiences that students can use to become successful construction managers. She has built and managed multi-million dollar buildings for residential and commercial builders. She has built, and managed the construction of over 2000 single-family homes in her career and started in the field as a superintendent and worked in various capacities from Project Manager to Director of Operations.

Stephanie is a full-time instructor and the current Undergraduate Coordinator for the Bert S. Turner Department of Construction Management at Louisiana State University. She is also a Certified Online Instructor and facilitates seven (7) online courses in various modules throughout the year. She is the Faculty Lead for the National Association of Home Builders (NAHB) National Student Competition. Stephanie is from Breau Bridge, La and currently lives in Baton Rouge, La. When time allows, you can find her with family, in the kitchen cooking up her mother's Cajun recipes, baking her grandmother's famous syrup cake and banana nut bread, or relaxing on a tropical beach somewhere with great friends or her beloved family.



---

## Session THREE | Distance Learning Trends, Technology and Lessons Learned (continued)



**Dr. Carol Massarra** | Assistant Professor, Graduate Program Director, East Carolina University

Dr. Carol Massarra is an Assistance Professor and the Graduate Program Director in the Department of Construction Management at East Carolina University. She is also the Director of Coastal Resilience at the Center for Sustainable Energy & Environmental Engineering (CSE3). Carol is an Online Learning Consortium (OLC) Certified Online Educator. Carol has mentored graduate, undergraduate and Honors College students and has received multiple recognitions including, recognition for making most significant positive contribution to students' education, and recognition for outstanding contribution made as a student Employee Supervisor of East Carolina University. One of her graduate student is the recipient of 2021 East Carolina University International Graduate Student Award. Carol is actively working on outreach programs with communities in Eastern North Carolina to introduce kids to hurricane resistance construction and Engineering. Carol's research interests lie in the areas of coastal resilience, statistical fragility models, and automated data collection and damage assessment. Her resilience construction research primary focuses on procedures to improve performance of coastal infrastructures.

---

Online and distance learning has revolutionized how educators at Louisiana State University (LSU) have been able to reach and teach working construction professionals remotely over the past 10 years. Led by online certified Faculty from the Bert S. Turner Department of Construction Management, this presentation will discuss the design and development of an online course that aligns with ACCE student learning outcomes while using the Quality Matters (QM) course design rubric. The presenters will run through a live online course demonstration using Moodle with focus on course management, instructor presence, student engagement, and online proctoring. They will also discuss lessons learned and best practices to aid others within academia and the workforce in developing and facilitating rigorous yet engaging online courses.



## Session FOUR | Workforce Development and Accreditation

### PRESENTERS



**Mr. Bill Good** | National Roofing Alliance an Chair, ACCE Construction Workforce Education Committee

Bill Good served as the CEO of the National Roofing Contractors Association (NRCA) for nearly 30 years, until his retirement in 2017. Since then, he has continued to work for the Roofing Alliance, a foundation affiliated with NRCA. The Roofing Alliance is a sustaining association member of ACCE and is involved in a number of activities related to education, training and philanthropy.

Bill is a graduate of the University of Virginia and holds his MBA from the University of Chicago. He served in leadership roles in several professional societies, served two terms as national board chairman for Rebuilding Together, a charity that rehabilitates single-family homes for low-income owners. Currently, Bill serves on the Board of Trustees of ACCE, on the board of directors of The Center for Workforce Inclusion and on the board of directors of Ronald McDonald House in Charleston, S.C.

Bill and his wife Sarah live in Seabrook Island, S.C., where they enjoy all the benefits of almost being retired.



**Dr. Mostafa Khattab** | President, Western States College of Construction

Dr. Khattab is the President of Western States College of Construction. He has over 30 years of experience as a teacher, researcher, and consultant in construction management and higher education. Dr. Khattab served as a professor and head of Colorado State University's Construction Management Department (CM) for 12 years. As a construction education professional, Dr. Khattab served as president of the Associated Schools of Construction (ASC), member of the American Council of Construction Education (ACCE) Board of Trustees, the Mechanical Contractors Association of America (MCAA) board of trustees, and the National Roofing Contractors Alliance (NRCA) Construction Management Schools Initiatives committee.

Dr. Khattab has successfully led several international initiatives sponsored by the United States Agency for International Development (USAID) and the Education for Employment Foundation (EEF). The Fulbright Commission named Dr. Khattab a Fulbright Specialist for his work to improve employment opportunities in the Middle East through innovations in higher education. He holds a Ph.D. in Industrial Engineering from the University of Nebraska."



**Ms. Heather Sherwood** | VP of Academic Affairs, Western States College of Construction

Heather Sherwood is the Vice President of Academic Affairs for Western States College of Construction-WSCC. She also serves as a member of the Specialty Contractors Institute Education Committee for the Rocky Mountain Mechanical Contractors Association. Heather is a former specialty contractor from Washington State, and also has extensive experience administering DOL Registered Apprenticeship programs. She is passionate about partnering with the Higher Education community to promote Registered Apprenticeship education throughout all occupational sectors.

---

Recent initiatives by ACCE are making significant progress with a variety of Trade Associations, Labor Organizations and Professional Development entities to accredit various education and training programs not offered at traditional institutions of higher education. This effort sets standards, establishes and measures student learning outcomes, and develops a process for review and assessment.

## Session FIVE | Industry Associations and Support

### PANELISTS



#### **Mr. Marty Garza | AGC Education Foundation**

Marty is a 1982 graduate of Texas A&M University and currently serves as the Vice President, Higher Education, for Joeris General Contractors in San Antonio, TX. Marty is an AIC Certified Professional Constructor and has been an advocate for and involved with construction education for over 30 years. He was appointed to the Board of the Associated General Contractors of America's Education & Research Foundation in 2010, served as the Foundation President in 2017 & 2018, and now serves as an Emeritus Board Member. Marty also represents the AGC on the Board of the American Council for Construction Education.



#### **Mr. Tim Mongeau | Association of Builders and Contractors**

Timothy Mongeau, ABC director of workforce development, supports ABC's 68 chapter network of more than 800 apprenticeship, craft, safety and construction management education programs across the country. He has more than 20 years of experience designing and implementing construction education and workforce development programs at Zachry Industrial and BE&K Construction Co. and has been a member of ABC and the NCCER workforce development and assessment committees for more than a decade. Previous to his construction career, Mongeau served 11 years active duty and two years in the reserves of the U.S. Navy.



#### **Dr. Warren Plugge | Associated Schools of Construction**

Dr. Warren Plugge is the Professor and Coordinator of the Central Washington University Construction Management program in Ellensburg, Washington. Dr. Plugge has been teaching construction education twenty-two years. Prior to arriving at Central Washington University in 2006 he also taught at Colorado State University in Fort Collins Colorado where he earned is PhD in Education and Human Resource Studies with an Interdisciplinary focus in Construction Management and Civil Engineering, Master's Degree in Manufacturing Technology and Construction Management, and Bachelor of Science in Construction Management. Dr. Plugge has worked in the construction industry in the positions of a project manager, project engineer, field engineer, surveyor, quality control and carpenter on residential, commercial, and heavy-civil projects for several different companies to include Erlandson Engineering, City of Ellensburg, Kittitas County, Granite Construction, PCL Construction, The Neenan Company, Rocky Mountain Prestress, and as a consultant on a variety of projects for non-profit organizations.



#### **Mr. Greg Bradshaw | American Institute of Constructors**

Gregg Bradshaw is a 1981 Graduate of the Construction Engineering Technology Department at Oklahoma State University. Based in the Dallas / Fort Worth Metroplex from 1981 to 2005, he served as Vice President of Operations and Vice President - Group Manager for two different firms, with a primary focus in the Shopping Center, Big Box Retail, and Hospitality Industry completing projects in twenty states, and managing an office and operations in West Palm Beach, Florida.

Since 2005, he has been based in Stillwater, Oklahoma first serving as Senior Vice President of a local commercial general contractor, and since 2017, as a Construction Manager for Joe D. Hall General Contractors. In 2006, he completed certification as a Certified Professional Constructor with the American Institute of Constructors. He has served on the AIC Constructor Certification Commission since 2016, including Chair 2019-2022. Currently he is member of the AIC Board of Directors (2021-Present), completing a one-year term as Vice President of the AIC Board of Directors, and will assume the role as President (2024-2025). He was elected to the AIC College of Fellows in 2022.

## Session FIVE | Industry Associations and Support (cont)

### PANELISTS



**Ms. Crissy Ingram** | National Association of Women in Construction

Crissy Ingram is the Executive Director for the National Association of Women in Construction. She has been with the Association since 2012 and earned her Certified Association Executive designation in 2020. She believes that accessibility to education is paramount to the industry. Crissy has three daughters, and has raised them with the knowledge that they can be and do anything! The mission and values of NAWIC are near and dear to her, and she is passionate about advancing the Association and the women within it.



**Mr. Dan Belcher** | Consultant

Dan Belcher is a Senior Area Advocate for Promising People in Orlando Florida. Dan's primary responsibility as a Senior Area Advocate is to advocate for training that can be utilized by individuals that are justice served across the United States. Dan's experience assists him in his duties of informing and updating the government, workforce, industry, education institutions, and correction facilities about Promising People and its activities. He also assists companies, schools, and governmental agencies implement workforce development activities to improve the industry and foster the growth of the craft professional.

Dan is also assisting the American Council of Construction Education (ACCE) as a workforce consultant.

Dan's former experience includes being the Director of Strategic Partnerships and Workforce Development for the National Center for Construction Education and Research (NCCER). He also served as the Career and Technical Education Consultant for the Education Service Center Region XI in Fort Worth and was the Director for Career and Technical Education for the Fort Worth Independent School District. Before that, he served the Fort Worth ISD in a variety of positions including Principal, Vice Principal, and teacher. Dan has been married to his wife Linda for 27 years and has a son Brantley (21) and a daughter Brooke (19).

Dan has his undergraduate degree from the University of North Carolina and his master's in education from the University of Texas Arlington.

---

Learn how ACCE Association Members support student careers through Student Chapters. Many Associations provide partnering opportunities for construction education, research, financial support, awards and scholarships.

## AFTERNOON SESSIONS

### ACCE Industry Caucus

#### PRESENTERS



**Ms. Joy Svoboda** | Chair, ACCE Marketing & Communications Committee

As a marketing professional with 26 years of experience in the AEC business sectors, Joy has worked closely with firm leadership, project managers, business development professionals and the trades. Joy has been involved with ACCE for over ten years and has led the Marketing Communications Committee as well as the Industry Caucus. She has been a member in training and a visiting member and will serve on her third full Accreditation Visit this spring. Joy has served on the IAB for Dunwoody located in Minneapolis and is currently an individual member of ACCE.

The Construction Industry is essential to the construction education process from the Program Level through facilitating the work of ACCE through educational program development and accreditation. The Industry Liaison Committee serves as the ACCE liaison with industry to initiate and organize industry functions with ACCE and to improve awareness of ACCE in the construction industry.





## Track ONE - Session A | Industry Participation in the Development of SLOs

### PANELISTS



**Dr. Chuck Berryman | Louisiana State University**

Dr. Charles (Chuck) Berryman has served 37 years in various, and sometimes concurrent, administrative roles for academia, professional organizations, and the construction industry. He left his industry career in 1992 to join Texas A&M University as a Visiting Assistant Lecturer. He later earned his doctorate then went on to work at the University of Nebraska where he achieved promotion to Full Professor.

He is currently Chair for the Bert S. Turner Department of Construction Management at Louisiana State University (LSU). Career highlights include program development for a Doctor of Philosophy in Construction Management (along with two Master of Science degree programs in the same field), Regional Director then President for the Associated Schools of Construction (ASC), member of the Board of Trustees for the American Council for Construction Education (ACCE), and Board member for LSU's Construction Industry Advisory Board (CIAC).

Dr. Berryman is heavily involved in curriculum development, program assessment, construction education, and online delivery of education at local, regional, and national levels



**Dr. Robert Ries | University of Florida**

Robert Ries is a Professor and Director of the Powell Center for Construction and the Environment at the Rinker School of Construction Management. He teaches courses in construction documents, sustainable design and construction, and value engineering that are both required and elective courses in the undergraduate and graduate programs in the School.

Dr. Ries's primary research work is focused on improving the environmental performance of buildings and the built environment. Dr. Ries has published over 120 peer-reviewed papers with work published in journals such as Energy Policy, Energy and Buildings, Journal of Cleaner Production, Building and Environment, Journal of Industrial Ecology, and the International Journal of Life Cycle Assessment.

Dr. Ries is the Chair of the ACCE Guidance Committee and a member and Chair of accreditation visiting teams.



**Dr. John Schmidt | Retired Ferris State University**

Dr. John Schmidt earned a B.S. and M.S. in Civil Engineering from the State University of New York at Buffalo (U.B.). He joined Exxon for about a decade, working in several construction management and computing positions. He left Exxon and returned to U.B. to pursue a Ph.D. in Civil Engineering/Construction Management. During this time, he taught at the university and worked as an environmental construction manager. After achieving his degree, he joined Ferris State University's Construction Management program. After twenty years, he retired as the Director of the School of Built Environment. He remains involved and committed to ACCE and improving the delivery of construction management curricula through the accreditation process.



---

## Track ONE - Session A | Industry Participation in the Development of SLOs (cont)



**Mr. Drew Yantis |** Senior Lecturer, Auburn University;  
Retired EVP Holder Construction

Drew is a Senior Lecturer in the McWhorter School of Building Science at Auburn University, having joined the faculty in January 2021. He actively supports the Association of General Contractors (AGC) Student Chapter and is an American Council of Construction Education (ACCE) Lifetime Member and past member of its Board of Trustees. Drew is active in the following ACCE committees: Standards, Marketing & Communications, and Industry Liaison. In addition, he is a regular ACCE Visiting Team member, supporting the accreditation of individual construction programs. Drew is a current member of the Industry Advisory Board for the Construction Science and Management Program at Tuskegee University.

Drew has over 32 years of experience providing Preconstruction and Construction Services with Holder Construction, focusing on Colleges and Universities. He was a member of Holder's Senior Leadership Committee and was instrumental in establishing its Sustainable Services Committee. Drew provided leadership to project teams completing over \$3 billion of successful projects, primarily for Colleges and Universities. He is a LEED accredited professional and has been actively involved in over 30 LEED Certified and Registered Projects. He received his BS in Building Construction from Auburn University in 1988 and is the past President of the Industry Advisory Council for the McWhorter School of Building Science at Auburn and past Chair of the Executive Advisory Board for the College of Architecture Design and Construction.



**Mr. Marty Garza |** AGC Education Foundation

Marty is a 1982 graduate of Texas A&M University and currently serves as the Vice President, Higher Education, for Joeris General Contractors in San Antonio, TX. Marty is an AIC Certified Professional Constructor and has been an advocate for and involved with construction education for over 30 years. He was appointed to the Board of the Associated General Contractors of America's Education & Research Foundation in 2010, served as the Foundation President in 2017 & 2018, and now serves as an Emeritus Board Member. Marty also represents the AGC on the Board of the American Council for Construction Education.

---

Unknown to general public, the construction industry has a huge impact in the operations of ACCE, especially as it relates to the Standards and student learning. A lot of effort goes into developing a consistent body of knowledge for the student graduating from an ACCE accredited program. To make this happen, industry and academia work together to determine what each program should do to produce quality students ready for employment. This Panel Discussion is designed to demonstrate how industry can participate in the development of Student Learning Outcomes (SLO) and how those SLOs can be successfully integrated into that degree program that you advise or into a summer internship.

## Track ONE - Session B | How to Create and Grow an Effective Industry Advisory Board

### PANELISTS



**Mr. Allen Galloway** | President, IUPUI Industry Advisory Board

Allen has been chair of CM IAB at IUPUI since 2011. During his tenure as Chair, he has increased the number of "active" IAB members from 3 to 40+ with 4 or 5 meetings per year. He spearheaded efforts to create IAB bylaws, mission statement, strategic plan, and dues structure. He also administered efforts in establishing the CM IAB as a non-for-profit corporation through the Internal Revenue Service which provides the IAB with tax-exempt status with the State of Indiana. Each year he is responsible for filing the corporate tax returns. He coordinated efforts to establish a CM Career Fair (fall and spring semesters) and initiated efforts to sponsor a booth at the Indiana School Counselors Conference.



**Ms. Sue Perlin** | Retired, Partner. Plante Moran, CPA

Sue is a Public Interest Trustee of the Board of Trustees of ACCE and also serves on ACCE's Finance Committee. She is a recently retired partner from Plante Moran, one of the nation's largest public accounting and business advisory firms. Sue has 38 years of experience serving not-for-profit organizations in all areas of accounting, audit, tax, and business consulting and is the past leader of Plante Moran's not-for-profit industry group. Sue's client base included cultural institutions, foundations, human service organizations, trade associations, private schools, and research and development organizations. Sue was often asked to speak to clients and their boards about governance and accountability issues, fraud considerations for not-for-profits, and implementation of new audit and accounting standards.



**Mr. Scott Couper** | LSU Construction Industry Advisory Board

Scott Couper, Chief Operating Officer of PALA- Interstate. PALA is an Industrial Construction company operating primarily in the Gulf Coast with Baton Rouge and Houston offices. Scott has 44 years Construction experience, 42 years with PALA.

He is a member of the LSU Construction Industry Advisory serving as Board Director, Past President and Treasure. He has B.S. in Construction Management from LSU and has been a Guest Lecturer in LSU Construction Management undergraduate classes. Scott serves ACCE on the ACCE Board of Directors and participant in Visiting Teams, IAB Committee, and the Construction Workforce Education Committee



**Dr. Charlie McIntyre** | Retired, IUPUI, Department Chair

Charlie McIntyre received his Ph.D. in civil engineering from Pennsylvania State University. Before joining IUPUI in 2014, he had a distinguished career in higher education at North Dakota State University, including service as interim department chair and graduate program coordinator within the Department of Construction Management and Engineering. He also served as an instructor and assistant professor of civil and environmental engineering at Pennsylvania State University. Prior to his work in higher education, Charlie served K-12 education as an elementary school teacher at St. Anthony School District in Newfoundland, Canada, and as a high school teacher at Assabet Valley Technical High School in Marlboro, Massachusetts.

## Track ONE - Session B (cont)

### PANELISTS



#### **Marjorie S. Chang Fuller**

Marjorie graduated from Washington State University with degrees in Architecture and Construction Management. She joined Hoffman Construction Company in 1990. Throughout her career at Hoffman Construction Company, Marjorie has worked in a variety of roles that include project engineer, scheduler, estimator, and purchasing manager. She is currently a business development manager, supporting both Portland and Seattle teams, and one of the lead recruiters for the Seattle office, helping to introduce Hoffman to students interested in career opportunities in the construction industry.

Marjorie is active in the community and serves on the following boards and organizations:

- WSU Construction Management Advisory Board, 2000-present, Chair
- WSU School of Design and Construction Advisory Board, 2012-present, Chair
- NAIOP Summer Social Committee Member, 2015-present, 2022-incoming Co-chair; 2023 Co-chair
- AIA Member, 2000-present
- DBIA Member, 2016-present
- ULI Member, 2017-present; Programs Committee Member, 2022-present
- American Council for Construction Education, Practitioner Trustee 2021-present, Standards Committee, IAB Committee
- NAIOP MarCom Committee Member, 2015-2018 (committee was absorbed by other committees)
- WSU Imagine Tomorrow Advisory Board, 2014-2017

Marjorie lives in Seattle with her dog Koa and two cats, Izzie and Kai. In her spare time, Marjorie can be found at CrossFit Loft, taking Koa out on puppy adventures, golfing, paddle boarding, reading, traveling or helping her business partners with the restaurants they own and operate in Seattle: Ma'ono (locations in West Seattle, University Village, Capitol Hill, and South Lake Union), Supreme (locations in West Seattle and University District), New Luck Toy (West Seattle), and Benbow Room (West Seattle).

---

Industry Advisory Boards positively impact Construction Management program's faculty, students, and research. The ACCE has long recognized this leading to the IAB requirements for accreditation.

This session will provide input from panelist with both industry and academic backgrounds on how to Create and Grow an IAB.

The first and most critical step to an effective IAB is to recruit and retain the right leadership and members. Finding the champions to start an IAB is the most critical step and can be the most difficult.

The key to attracting new members and retaining them is engagement. Providing opportunities for industry to interact with both faculty and students is paramount and beneficial to all parties. Examples of how to effectively accomplish this will be provided.

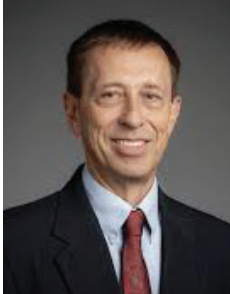
IAB can also provide financial support to CM programs, so fund raising opportunities, as well as, methods to manage / transfer the funds will be presented.

As every program has different needs, the panelist will provide the Pros and Cons of different IAB structures and financial models.

---

## Track TWO - Initial Visiting Team Training

### PRESENTERS



**Dr. Al Bleakley | Chair, ACCE Training Committee**

Dr. Bleakley was an Army Corps of Engineers officer for 30 years, living in 15 different places including Europe and the Middle East. He led soldiers and managed design and construction contracts in the U.S. and 10 foreign countries including during both Gulf Wars, Bosnia, and Somalia. He has also managed environmental clean-ups, earthquake, hurricane, and flood disaster recovery including New Orleans after hurricane Katrina, and major Mississippi River floods. After retiring from the Army he joined the Florida Institute of Technology faculty in 2009 to help develop a new Construction Management B.S. degree program.



**Ms. Heather Gay | Vice Chair, ACCE Training Committee**

Heather (she, her, hers) is the Director of Construction and Management programs at Dunwoody College of Technology in Minneapolis, Minnesota. She has been involved in the construction industry for 25 years and in higher education for 13. Heather has implemented creative learning partnerships with the Girl Scouts River Valleys and Rebuilding Together Twin Cities. Prior to moving to academics, Heather worked on large industrial and commercial projects around the U.S., including Barilla Pasta, Carlson Hotels, and Kraft Foods. She worked as a project officer for FEMA after Hurricane Katrina, assessing damaged schools in greater Louisiana.

---

It is important to have industry practitioners represented on every Visiting Accreditation Team! If your time with ACCE is limited to February 23rd, we hope you will consider attending this training session. The training will qualify to participate in a Visiting Team as a Member in Training (MIT). After completing this initial visit and completing Advanced Team Member Training and Visiting Team Case Studies Training. You will be a qualified visitor. The purpose of the Visiting Team is to evaluate a program based on the institution's stated goals and objectives, and to verify compliance with ACCE standards and criteria in those areas that cannot be determined without visiting the institution. The committee conducted a visit to a pilot program in Colorado in late 2021, which resulted in the first-ever ACCE accreditation for a workforce program.



## Questions to ask your Program about Accreditation...

### How do you want your program to be viewed by other professionals?

- The American Council for Construction Education (ACCE) has been accrediting construction higher education programs for nearly 50 years. Founded in 1974 by Associated General Contractors of America, Associated Schools of Construction (ASC), and the American Institute of Constructors (AIC), ACCE maintains an appropriate balance among foundational courses needed in business, engineering, architecture, science, and communications, as well as the entire range of construction specific courses. ACCE accreditation is not seen through the “lens” of another discipline (like engineering). Construction education programs are unique and not a subset of any other discipline but are built on a combination of disciplines. This makes a graduate of an ACCE program a highly desirable employee.
- Construction Management has been categorized under the ABET’s Applied and Natural Sciences Accreditation Commission (ANSAC). ANSAC accreditation DOES NOT lead to PE registration and is NOT associated with engineering. Construction management has now been aligned with ANSAC accredited programs: Environmental Health, Safety, Industrial Hygiene, Health Physics, and Surveying. This implies CM graduates are para-professionals who serve in support of the Engineer as a “junior engineer”.

### Is the accreditation agency’s primary focus on construction education?

- ACCE is focused solely on construction. It addresses and establishes appropriate Standards for a wide variety of construction programs in the U.S.
- ABET is not focused on construction education. It is focused on engineering or engineering technology types of education...note their name – Accreditation Board for Engineering and Technology. From their website: “We are a not-for-profit, non-governmental accrediting agency for programs in applied science, computing, engineering, and engineering technology”. No construction in the title or in their overall mission.

### Do you have to be an organizational member to be involved with the accreditation agency?

- ACCE encourages participation of program IAB members on its committees. ACCE requires a representative from industry be included on every accreditation Visiting Team. ACCE standards were developed by and are enforced by BOTH academic professionals and construction industry professionals. As stated in Section 3.10 of the ACCE Bylaws, “Each educational institution that has at least one ACCE accredited program may appoint one Educator and one Practitioner as its ACCE representatives....” The ACCE Board of Trustees must include an equal number of Practitioner and Educator members. We also have requirements that all of our Committees have an equal share of industry and educator members.
- One must be a member of the Construction Management Association of America (CMAA) to participate in the official ANSAC accreditation process.

### What is the US Department of Education’s view of construction management?

- Construction Management is not engineering, it is more closely related to Business. The federal government Classification of Instruction Program (CIP) codes place Construction Management (52.2001) under Business (52.xxxx) not Engineering (14.xxxx). This provides a taxonomic scheme that supports the accurate tracking and reporting of fields of study and program completions activity. Academic and the federal government use these codes primarily for resource allocation.

### What is the construction emphasis of your program?

- Most construction programs in the US focus on the management of construction with varying emphasis in construction technology, business, architecture or engineering (or equal emphasis on all four). ACCE Standards require a mix of coursework in Construction, Communications, Mathematics, Physical Science, Business, and Management.
- The ANSAC Construction Management accreditation is defined for owner representatives. CMAA uses a very narrow definition of CM. Very few construction programs in the United States focus only on this type of a career path.



---

## Questions to ask your Program about Accreditation...continued

### **As it relates to academic standards – where is the “bar” for construction programs?**

- Because ACCE focuses solely on construction, we can address and establish appropriate Standards for most all construction related programs in the U.S. The ACCE Standards and Criteria for the Accreditation of Construction Education Programs (Document 103) is a fully integrated document outlining a broad range of requirements that must be met by accredited programs at Associate and Bachelor's levels. Standards are clear and concise. They focus on learning outcomes with some prescriptive requirements that maintain student interaction with other disciplines (engineering, business, architecture, etc.) They include a list of 13 Student Learning Outcomes that must be met by Associate degree programs or with the 20 Student Learning Outcomes required for students at the Baccalaureate level.
- ANSAC's construction management standards have 11 learning outcomes with some prescriptive elements. They place emphasis on the narrow definition of construction management as an owner's agent. ANSAC Criteria consist of a four-page document describing the criteria that all Applied Science programs must meet accompanied by a one-page document of Criteria specific to construction management. A national comparison would not be to other construction education programs in the U.S. but to programs in their same ANSAC area (i.e. Environmental Health, Safety, Industrial Hygiene, Health Physics, Surveying, Physics, Biology and Chemistry etc.).

### **Are advisory boards important to the accrediting agency?**

- ACCE Standards recognize and require support from industry: that “an advisory committee, consisting of representatives from the construction industry, be actively involved in an advisory role for the construction program”.
- ANSAC does not require the program to have an industry advisory board. They only require the use of “stakeholders” to review their learning outcomes. This could be industry, alumni, or students.

### **How are standards determined?**

- ACCE mandates that industry and academics have equal partnership in the development of accreditation standards for construction education.
- The newly developed ANSAC construction management standards were the responsibility of CMAA. Input was provided from various stakeholders, but ultimately these standards were approved solely by ANSAC (CMAA members).

### **Do the accreditation standards facilitate industry needs?**

- All ACCE standards were developed, approved and enforced by BOTH academic professionals and construction industry professionals. ACCE has a broad representation of geographic areas and construction types. ACCE Board includes an equal number of Industry (Association & IAB members) and academic representatives to ensure its policies, procedures and standards align with current construction industry needs and requirements. ACCE was jointly founded by Industry Associations and ASC in 1974 and has involved industry practitioners since inception. It accredits associate, bachelor, and master's degree programs to facilitate industry needs. It also recognizes industry associations' non-degree programs.
- CMAA approved a mix of student learning outcomes with some prescriptive elements. These ANSAC standards have no requirement for an industry advisory board. Additionally, it excludes associate degree programs.

### **Easy or Quality?**

- If IAB members are looking for rigor and the “gold standard” that compares your program to the nearly 100 construction education programs already accredited in the nation, then look to ACCE.
- “Easy” does not equate to quality. Programs may gravitate towards ANSAC as it is an easier accreditation process due to the fewer number of standards (as compared to ACCE) and due to its narrow definition of construction management. If an IAB member is looking for simple and owner agents as employees, then ANSAC would be the way to go.

## ACCE Founder's Award, DuPree Scholarship and NHE Scholarship

*Information on the following awards can be found on the ACCE-HQ.org website*

### Overviews:

#### **Founders Award**

The ACCE Founder's Award is bestowed annually upon an individual, company or organization that has demonstrated a profound effect on construction education during the last year.

#### **DuPree Construction Education Fund Scholarship**

Applicants must be accepted in a Masters or PhD construction-related program, in an institution with an ACCE-accredited program. Scholarship(s) of \$5,000 each will be awarded. Applicants must desire a career as faculty in an ACCE-Accredited Construction Management program after completing their studies. Current, full-time faculty are not eligible.

#### **DuPree Construction Education Fund/National Housing Endowment Scholarship**

Applicants must be accepted in a Masters or PhD residential construction related program, in an institution with an ACCE-accredited program. Scholarship(s) of \$5,000 each will be awarded. Applicants are expected to become faculty at an ACCE-Accredited program with aspirations to teach residential construction curriculum. Residential experience is required.

#### **Mark Benjamin Lifetime Achievement Award**

Nominees must be a construction practitioner, educator or retired from the industry. They must have given distinguished service to construction education, and be above the age of 55.

